

GAS LOG SETS | VENT-FREE BURNERS



AMERICAN HEARTH



SLOPE GLAZE BURNERS AND MATCHING LOG SETS

Our popular Slope Glaze Burners contain ceramic beads which tumble the gas to create exceptionally realistic flame movement. We offer traditional refractory concrete and Burncrete® logs. Each log is hand-painted to bring out the rich detail.

Our Vent-Free Burners are approved for use in any certified vent-free firebox. They may be also installed in an existing wood-burning fireplace, with the damper closed, to operate as a vent-free heating system. For applications where you want the ambiance of a fire without the heat, our Millivolt and manual burners are also certified for installation as decorative vented log sets.

- **16, 18, 24 and 30-inch Vent-Free Burners – up to 38,000 Btu**
- **Millivolt (VF SR), Manual (VF SM), Intermittent Pilot (VF SE), and Variable Flame (VF SV) models**
- **Choose from Refractory and Burncrete® Log Sets**

*Ravenwood Refractory Log Set
(ALS-24RV) with Vent-Free Slope
Glaze Burner System (VFSE-24)*



*Ravenwood Select Refractory Log Set
(ALS-24RVS) with Vent-Free Slope
Glaze Burner System (VFSE-24)*



*Williamsburg Refractory Log Set
(ALS-24CR2) with Vent-Free Slope
Glaze Burner System (VF SR-24)*



Slope Glaze Burners and Logs



*Stacked Wildwood Refractory
Log Set (LS24WRR) with
Vent-Free Slope Glaze
Burner System (VFSR-24)*



*Super Stacked Wildwood
Refractory Log Set (LS24WRS)
with Vent-Free Slope Glaze
Burner System (VFSR-24)*



*Driftwood Burncrete®
Log Set (LS-24CD) with
Vent-Free Slope Glaze
Burner System (VFSR-24)*



*Birch Burncrete®
Log Set (LS-18CB) with
Vent-Free Slope Glaze
Burner System (VFSR-18)*

Slope Glaze Burners and Logs

*Saratoga Refractory Log Set
(ALS-24SG) with Vent-Free
Slope Glaze Burner System
(VFSR-24)*



*Charleston Refractory Log Set
(ALS-24CRI) with Vent-Free
Slope Glaze Burner System
(VFSR-24)*



*Charleston Select Refractory Log Set
(ALS-24CRIS) with Vent-Free
Slope Glaze Burner System
(VFSR-24)*



*Refractory Yorktown Log Set
(ALS-24YK) with Vent-Free
Slope Glaze Burner System
(VFSE-24)*



Log Sets (Require Slope Glaze Burner)

| Model | Log Set Description | Required Burner Size | Fits Empire Firebox | Ship Wt. (lb) |
|-------------|-----------------------------------|----------------------|---------------------------|---------------|
| Refractory | | | | |
| ALS-16-CR1 | Charleston, 6-piece | 16 | VFD32FB, VFP32FB, VFS32FB | 20 |
| ALS-18-CR1 | Charleston, 6-piece | 18 | VFD32FB, VFP32FB, VFS32FB | 24 |
| ALS-24-CR1 | Charleston, 6-piece | 24 | VFD36FB, VFP36FB, VFS36FB | 28 |
| ALS-30-CR1 | Charleston, 6-piece | 30 | VFD42FB, VFP42FB, VFS42FB | 32 |
| ALS-18-CR1S | Charleston Select, 8-piece | 18 | VFD32FB, VFP32FB, VFS32FB | 55 |
| ALS-24-CR1S | Charleston Select, 9-piece | 24 | VFD36FB, VFP36FB, VFS36FB | 59 |
| ALS-30-CR1S | Charleston Select, 9-piece | 30 | VFD42FB, VFP42FB, VFS42FB | 69 |
| ALS-18-CR2 | Williamsburg, 13-piece | 18 | VFD32FB, VFP32FB, VFS32FB | 55 |
| ALS-24-CR2 | Williamsburg, 13-piece | 24 | VFD36FB, VFP36FB, VFS36FB | 60 |
| ALS-30-CR2 | Williamsburg, 13-piece | 30 | VFD42FB, VFP42FB, VFS42FB | 66 |
| ALS-18-RV | Ravenwood Log Set, 8-piece | 18 | VFD32FB, VFP32FB, VFS32FB | 37 |
| ALS-24-RV | Ravenwood Log Set, 8-piece | 24 | VFD36FB, VFP36FB, VFS36FB | 40 |
| ALS-30-RV | Ravenwood Log Set, 8-piece | 30 | VFD42FB, VFP42FB, VFS42FB | 50 |
| ALS-24-RVS | Ravenwood Select Log Set, 9-piece | 24 | VFD36FB, VFP36FB, VFS36FB | 56 |
| ALS-30-RVS | Ravenwood Select Log Set, 9-piece | 30 | VFD42FB, VFP42FB, VFS42FB | 66 |
| ALS-18-SG | Saratoga, 10-piece | 18 | VFD32FB, VFP32FB, VFS32FB | 41 |
| ALS-24-SG | Saratoga, 10-piece | 24 | VFD36FB, VFP36FB, VFS36FB | 47 |
| ALS-30-SG | Saratoga, 10-piece | 30 | VFD42FB, VFP42FB, VFS42FB | 55 |
| ALS-18-YK | Yorktown, 5-piece | 18 | VFD32FB, VFP32FB, VFS32FB | 42 |
| ALS-24-YK | Yorktown, 6-piece | 24 | VFD36FB, VFP36FB, VFS36FB | 47 |
| ALS-30-YK | Yorktown, 6-piece | 30 | VFD42FB, VFP42FB, VFS42FB | 56 |
| LS-18WRR | Stacked Wildwood, 5-piece | 18 | VFD32FB, VFP32FB, VFS32FB | 35 |
| LS-24WRR | Stacked Wildwood, 5-piece | 24 | VFD36FB, VFP36FB, VFS36FB | 42 |
| LS-30WRR | Stacked Wildwood, 5-piece | 30 | VFD42FB, VFP42FB, VFS42FB | 51 |
| LS-18WRS | Super Stacked Wildwood, 7-piece | 18 | VFD32FB, VFP32FB, VFS32FB | 39 |
| LS-24WRS | Super Stacked Wildwood, 7-piece | 24 | VFD36FB, VFP36FB, VFS36FB | 52 |
| LS-30WRS | Super Stacked Wildwood, 7-piece | 30 | VFD42FB, VFP42FB, VFS42FB | 57 |
| Burncrete® | | | | |
| LS-18CD | Driftwood, 8-piece | 18 | VFD32FB, VFP32FB, VFS32FB | 27 |
| LS-24CD | Driftwood, 10-piece | 24 | VFD36FB, VFP36FB, VFS36FB | 33 |
| LS-30CD | Driftwood, 10-piece | 30 | VFD42FB, VFP42FB, VFS42FB | 39 |

Vent-Free Slope Glaze Burners

| Model | Description | Log Length (inches) | Btu Input | Non-Empire Minimum Firebox Dimensions | | | | Ship Wt. (lb) |
|--|--------------------|---------------------|-----------|---------------------------------------|---------------------|----------------|-----------------|---------------|
| | | | | Front Width (inches) | Rear Width (inches) | Depth (inches) | Height (inches) | |
| Vent-Free Manual, Standing Pilot/Piezo | | | | | | | | |
| VFSM-18 | Slope Glaze Burner | 18 | 32,000 | 32 | 21 | 14 | 17 | 22 |
| VFSM-24 | Slope Glaze Burner | 24 | 36,000 | 34 | 27 | 14 | 18 | 25 |
| VFSM-30 | Slope Glaze Burner | 30 | 38,000 | 38 | 30 | 14 | 20 | 32 |
| Vent-Free On/Off Millivolt, Standing Pilot | | | | | | | | |
| VFSR-16 | Slope Glaze Burner | 16 | 25,000 | 24 | 18 | 11 1/2 | 18 | 18 |
| VFSR-18 | Slope Glaze Burner | 18 | 32,000 | 28 | 17 | 14 | 17 | 24 |
| VFSR-24 | Slope Glaze Burner | 24 | 36,000 | 30 | 23 | 14 | 18 | 27 |
| VFSR-30 | Slope Glaze Burner | 30 | 38,000 | 34 | 26 | 14 | 20 | 30 |
| Vent-Free Variable Flame, Includes Variable Remote, Standing Pilot/Piezo | | | | | | | | |
| VFSV-16 | Slope Glaze Burner | 16 | 25,000 | 24 | 18 | 11 1/2 | 18 | 18 |
| VFSV-18 | Slope Glaze Burner | 18 | 32,000 | 28 | 17 | 14 | 17 | 24 |
| VFSV-24 | Slope Glaze Burner | 24 | 36,000 | 30 | 23 | 14 | 18 | 27 |
| VFSV-30 | Slope Glaze Burner | 30 | 38,000 | 34 | 26 | 14 | 20 | 30 |
| Vent-Free Intermittent Pilot, Includes Thermostat Variable Remote | | | | | | | | |
| VFSE-18 | Slope Glaze Burner | 18 | 32,000 | 28 | 17 | 14 | 17 | 25 |
| VFSE-24 | Slope Glaze Burner | 24 | 36,000 | 30 | 23 | 14 | 18 | 28 |
| VFSE-30 | Slope Glaze Burner | 30 | 38,000 | 34 | 26 | 14 | 20 | 31 |

CONTOUR LOG SET/BURNER SYSTEMS

These systems combine the burner and log set into one package. With a precision-ported tube-style burner, they provide great looks at an exceptional value. Because they require a minimum firebox depth of just 12 inches, these compact systems fit easily into most fireplaces.

- **Choose Concord Refractory or Trenton Ceramic Fiber model**
- **18, 24 and 30-inch Vented/Vent-Free Burners – up to 40,000 Btu**
- **Millivolt (VFDR), Manual (VFDM), and Thermostat (VFDT) models**
- **Special 10,000 Btu Millivolt model for bedroom applications (where allowed by code)**

TRENTON LOG SET

The Trenton Log Set features richly detailed, hand-painted Ceramic Fiber logs mounted atop our Vent-Free Contour Burner. This complete set includes glowing embers to add to the illusion of a real wood fire at any heat setting. This competitively priced set is ideal for existing fireplaces and fireboxes and for new construction. Available in manual control, thermostat control, or remote-ready Millivolt – in 28,000 Btu, 34,000 Btu and 40,000 Btu.



Trenton Ceramic Fiber Log Set and Vent-Free Burner Combination (VFDR-24LB)

CONCORD LOG SET

The Concord Log set features the Contour Burner with ultra-realistic, refractory logs with loads of hand-painted detail. The Concord set delivers rich warmth and bold looks to complement any style, with the same versatility and control options as the Trenton.

The Trenton and Concord are also offered in 10,000 Btu models for bedroom applications, where allowed by code.



Concord Refractory Log Set and Vent-Free Burner combination (VFDR-18-LBW)

Vent-Free Contour Burner & Log Set Combinations

| Model | Log Set Description | Btu Input | Fits Empire Firebox | Minimum Firebox Dimensions | | | | Ship Wt. (lb) |
|---------------------|---------------------|-----------|-------------------------|----------------------------|---------------------|----------------|-----------------|---------------|
| | | | | Front Width (inches) | Rear Width (inches) | Depth (inches) | Height (inches) | |
| VFDR-18LB10 | Trenton, 5-piece | 10,000 | VFD32FB, VFP32, VFS32FB | 28 | 17 | 12 | 17 | 21 |
| VFDR-18LB | Trenton, 5-piece | 28,000 | VFD32FB, VFP32, VFS32FB | 28 | 17 | 12 | 17 | 21 |
| VFDR-24LB | Trenton, 5-piece | 34,000 | VFD32FB, VFP32, VFS32FB | 30 | 23 | 12 | 18 | 22 |
| VFDR-30LB | Trenton, 7-piece | 40,000 | VFD36FB, VFP36, VFS36FB | 34 | 26 | 12 | 20 | 27 |
| VFDR-18LBW10 | Concord, 7-piece | 10,000 | VFD32FB, VFP32, VFS32FB | 28 | 17 | 12 | 17 | 48 |
| VFDR-18LBW | Concord, 7-piece | 28,000 | VFD32FB, VFP32, VFS32FB | 28 | 17 | 12 | 17 | 48 |
| VFDR-24LBW | Concord, 7-piece | 34,000 | VFD32FB, VFP32, VFS32FB | 30 | 23 | 12 | 18 | 54 |
| VFDR-30LBW | Concord, 7-piece | 40,000 | VFD36FB, VFP36, VFS36FB | 34 | 26 | 12 | 20 | 67 |



American Hearth Shiloh Log Set (LSU-24SF) on a Vent-Free Slope Glaze Vista Burner in a peninsula firebox with custom tile surround. The optional Log Embers Kit (EK-2) and Platinum Glowing Embers (PE20) add that extra spark of realism.

MULTI-SIDED SLOPE GLAZE BURNERS AND MATCHING LOG SETS

Designed to fit see-through and peninsula fireboxes, our Vent-Free Slope Glaze Vista Burners provide a great view from any angle. Ceramic beads inside the burner tumble the gas to create exceptionally realistic flame movement.

- **Choose from Raleigh Refractory or Shiloh Ceramic Fiber Log Sets**
- **18, 24 and 30-inch Vent-Free Vista Burners – up to 40,000 Btu**
- **Choose Millivolt or Intermittent Pilot**
- **Millivolt models include an on/off switch but will operate with Empire remote controls**



Rugged looking Refractory logs give the Raleigh Log Set a rustic look on a grand scale.



*Opposite Side View (above)
and End View (below)*



*Opposite Side View (above)
and End View (below)*



Just like a real wood fire, the Shiloh Ceramic Fiber Log Set provides a different look from every angle. The Vent-Free Slope Glaze Vista Burner neatly conceals its controls behind a sliding panel.

Log Set Descriptions

| Model | Log Set Description | Fits Burner | Ship Wt. (lb) | Model | Log Set Description | Fits Burner | Ship Wt. (lb) |
|------------|---------------------|-------------|---------------|---------------|---------------------|-------------|---------------|
| Refractory | | | | Ceramic Fiber | | | |
| LSU-18RR | Raleigh, 9-Piece | 18 | 48 | LSU-18SF | Shiloh, 5-Piece | 18 | 6 |
| LSU-24RR | Raleigh, 11-Piece | 24 | 58 | LSU-24SF | Shiloh, 6-Piece | 24 | 9 |
| LSU-30RR | Raleigh, 11-Piece | 30 | 69 | LSU-30SF | Shiloh, 6-Piece | 30 | 10 |

Vent-Free Slope Glaze Vista Burner

| Model | Description | Log Length (inches) | Btu Input | Non-Empire Minimum Firebox Dimensions | | | | Ship Wt. (lb) |
|-------------------------|------------------------------|---------------------|-----------|---------------------------------------|---------------------|----------------|-----------------|---------------|
| | | | | Front Width (inches) | Rear Width (inches) | Depth (inches) | Height (inches) | |
| Millivolt, Remote Ready | | | | | | | | |
| VFSUR-18 | Slope Glaze Vista Burner, MV | 18 | 36,000 | 22 | 22 | 17 | 17 | 34 |
| VFSUR-24 | Slope Glaze Vista Burner, MV | 24 | 38,000 | 28 | 28 | 17 | 18 | 43 |
| VFSUR-30 | Slope Glaze Vista Burner, MV | 30 | 40,000 | 32 | 32 | 17 | 18 | 49 |
| VFSUE-18 | Slope Glaze Vista Burner, IP | 18 | 36,000 | 22 | 22 | 17 | 17 | 34 |
| VFSUE-24 | Slope Glaze Vista Burner, IP | 24 | 38,000 | 28 | 28 | 17 | 18 | 43 |
| VFSUE-30 | Slope Glaze Vista Burner, IP | 30 | 40,000 | 32 | 32 | 17 | 18 | 49 |

LOFT BURNER SYSTEMS

Loft Burners deliver a contemporary look with an artistic flair – by itself or accessorized to suit the room. Choose decorative tops and firebox liners, in reflective black or brushed stainless steel, and crushed glass in black polished, blue clear, and clear frost.

- **18, 24 and 30-inch Vent-Free Burners – up to 40,000 Btu**
- **Millivolt models include an on/off switch but will operate with Empire remote controls and thermostats**
- **Intermittent Pilot models include a variable flame height thermostat remote control with 30 percent turndown (for vent-free installation only)**
- **Special 10,000 Btu Millivolt model for bedroom applications (where allowed by code)**

A vent-free Millivolt Loft Burner may also be installed as a decorative appliance in a vented fireplace to provide ambiance and light – but without the heat. In a vented installation, the burner cannot be operated by thermostat and the flue damper must be blocked open. A damper clamp is included with each Millivolt Loft burner. Because IP Loft Burners include a thermostat and may not be installed as decorative appliances, a non-thermostat remote is available.



Loft Series Burner (VFRL-24) with Stainless Steel Decorative Top (DT-24-SS). Shown in existing masonry firebox.

LOFT BURNER DECORATIVE ACCESSORIES

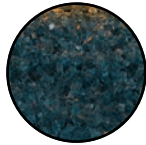


*Top Row left to right: No Decorative Options, Polished Black Decorative Top, Brushed Stainless Steel Decorative Top.
Bottom Row left to right: Blue Clear Decorative Glass, Medium Decorative Rocks and Accent Pebbles, Polished Black Decorative Glass.
(Clear Frost Decorative Glass shown on opposite page)*

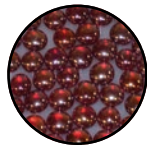
DECORATIVE MEDIA



Onyx Solid Drops
One-inch



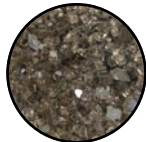
Blue Clear Crushed



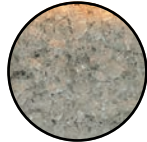
Sangria Luster Droplets
1/2-inch



Glacier Ice Droplets
1/2-inch



Bronze Reflective Crushed



Clear Frost Crushed



Black Polished Crushed



Copper Reflective Crushed



Medium Rocks



Accent Pebbles



Loft Series Vent-Free Multi-sided burner (VFRU-24) with Clear Frost Decorative Glass (DG-30-CLF). Shown in a Vent-Free peninsula firebox with Flush Louvers.

Vent-Free Loft Series Burners

| Model | Description | Btu Input | Fits Empire Fireboxes | Non-Empire Minimum Firebox Dimensions | | | | Ship Wt. (lb) |
|---|----------------------|-----------|-----------------------|---------------------------------------|---------------------|----------------|-----------------|---------------|
| | | | | Front Width (inches) | Rear Width (inches) | Depth (inches) | Height (inches) | |
| On/Off Millivolt, Standing Pilot | | | | | | | | |
| VFRL-18-10 | Loft Burner, 18-inch | 10,000 | VF(D,P,S)32 | 28 | 21 | 13 | 17 | 13 |
| VFRL-18 | Loft Burner, 18-inch | 26,000 | VF(D,P,S)32 | 28 | 21 | 13 | 17 | 13 |
| VFRL-24 | Loft Burner, 24-inch | 36,000 | VF(D,P,S)36 | 34 | 27 | 13 | 18 | 15 |
| VFRL-30 | Loft Burner, 30-inch | 40,000 | VF(D,P,S)42 | 40 | 33 | 13 | 20 | 18 |
| Intermittent Pilot, Includes Thermostat Variable Remote Control | | | | | | | | |
| VFIL-18 | Loft Burner, 18-inch | 26,000 | VF(D,P,S)32 | 28 | 21 | 13 | 17 | 14 |
| VFIL-24 | Loft Burner, 24-inch | 36,000 | VF(D,P,S)36 | 34 | 27 | 13 | 18 | 16 |
| VFIL-30 | Loft Burner, 30-inch | 40,000 | VF(D,P,S)42 | 40 | 33 | 13 | 20 | 18 |

Vent-Free Multi-Sided Loft Series Burners

| Model | Description | Btu Input | Fits Empire Fireboxes | Non-Empire Minimum Firebox Dimensions | | | | Ship Wt. (lb) |
|---|----------------------------------|-----------|-----------------------|---------------------------------------|---------------------|----------------|-----------------|---------------|
| | | | | Front Width (inches) | Rear Width (inches) | Depth (inches) | Height (inches) | |
| On/Off Millivolt, Standing Pilot | | | | | | | | |
| VFRU-24 | Multi-Sided Loft Burner, 24-inch | 36,000 | VFP36(S,P)B | 32 | 32 | 17 1/2 | 18 | 21 |
| Intermittent Pilot, Includes Thermostat Variable Remote Control | | | | | | | | |
| VFIU-24 | Multi-Sided Loft Burner, 24-inch | 36,000 | VFP36(S,P)B | 32 | 32 | 17 1/2 | 18 | 20 |

Decorative Accessories for Loft Series Burners

| Burner Size | Polished Black Decorative Top | Brushed SS Decorative Top | Black Polished Decorative Glass | Blue Clear Decorative Glass | Clear Frost Decorative Glass | Medium Sized Decorative Rocks | Accent Pebbles |
|--------------------------|-------------------------------|---------------------------|---------------------------------|-----------------------------|------------------------------|-------------------------------|----------------|
| Standard Loft Burners | | | | | | | |
| 18-inch | DT-18-PB | DT-18-SS | DG-1-BKP | DG-1-BUC | DG-1-CLF | DR-1-FMA | DRFPA |
| 24-inch | DT-24-PB | DT-24-SS | DG-1-BKP | DG-1-BUC | DG-1-CLF | DR-1-FMA | DRFPA |
| 30-inch | DT-30-PB | DT-30-SS | DG-1-BKP | DG-1-BUC | DG-1-CLF | DR-1-FMA | DRFPA |
| Multi-Sided Loft Burners | | | | | | | |
| 24-inch | DTU-24-PB | DTU-24-SS | DG-1-BKP | DG-1-BUC | DG-1-CLF | DR-1-FMA | DRFPA |

Control Accessories

| Model | Description Note: Thermostats may not be used in vented applications | Ship Wt. |
|--------|---|----------|
| FRBC | Battery Operated Remote Control – On/Off | 1 |
| FRBTC2 | Battery Operated Remote Control w/ Thermostat (not for vented applications) | 1 |
| FREC | Electric Remote Control – On/Off | 1 |
| FRBTPS | Programmable Remote Control, Battery Operated (not for vented applications) | 2 |
| FWS-1 | Wall Switch – On/Off | 1 |
| TMV | Wall Thermostat, Millivolt – Reed Switch (not for vented applications) | 2 |
| TRW | Wireless Remote Wall Thermostat | 2 |
| Model | Non-Thermostat Remotes Replaces thermostat remote transmitter when installing a vent-free IP burner in a vented application. | Ship Wt. |
| FRIP | Battery Operated Non-Thermostat Remote Control Transmitter (Fits VFIL, VFNI, VFSE Burners) | 1 |
| FRIPXV | Battery Operated Non-Thermostat Remote Control Transmitter (Fits VFXV Burners) | 1 |

Log Set Accessories

| Model | Description | Ship Wt. |
|-----------|--|----------|
| ADV110-6V | Adapter 110 AC to 6 Volt DC (fits VFSE Burners) | 2 |
| DCG-24-BL | Decorative Cast Grate, 24-inch, Black (Slope only) | 10 |
| EK-1 | Ember Kit | 4 |
| EK-2 | Large Log Ember Kit | 8 |
| ELH-1 | Adjustable Fireplace Hood (28-inch to 48-inch) Black | 5 |
| PE20 | Platinum Glowing Embers (1 set) | 1 |
| PE20-12 | Platinum Glowing Embers (Box of 12) | 2 |
| LR-18 | Riser, 2-inch, for Slope Glaze Burner, 18-inch | 5 |
| LR-24 | Riser, 2-inch, for Slope Glaze Burner, 24-inch | 6 |
| LR-30 | Riser, 2-inch, for Slope Glaze Burner, 30-inch | 6 |

| Gas Inlet | |
|--|---|
| Type of Gas | Natural or LP |
| Iron Pipe Size (N.P.T.) | 3/8-inch |
| Ignition System | Standing Pilot/Piezo and Intermittent Pilot |
| Warranty | |
| All vented parts carry a three-year limited warranty. All vent-free parts carry a five-year limited warranty with a five-year limited labor warranty. All remote controls carry a one-year limited parts warranty. | |
| Installation and Safety | |
| Pilot equipped with automatic shut-off and Oxygen Depletion Sensor on Vent-Free Burners. Refer to your Owner's Manual for complete installation and safety information. | |



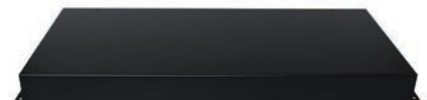
EK-1 Traditional Ember Bed Kit includes six burnt log pieces, white ash, and lava rock.



EK-2 Large Log Ember Kit available for Multi-sided log sets or large fireplaces.



Decorative Cast Grates (DCG-24-BL)



Log Riser (LR-24)

This appliance is design-certified to the



Empire is committed to continuous product improvement; specifications are subject to change without notice. Dimensions in this brochure are approximate; read and follow the framing dimensions in the owners manual supplied with your Empire product. Flame size, shape, and color will vary from photos. Log Sets shown with Platinum Glowing Embers (PE20) and Ember Bed Kit (EK-1).

918 Freeburg Ave.
Belleville, IL 62220-2623
e-mail: info@empirecomfort.com

AH-00835 2/22/21

americanhearth.com