

Type C407-10

Parts List

Replacement Kits⁽¹⁾

Gland Assembly Kit includes keys 15A, 15B, 15D, 15E, 15F, 15G, 15H, 15J, 15P, 15R, 15S and 15W

T20850T0012*

Soft Seals Kit (main and gland seals) includes keys 7, 11, 15B, 15D, 15F, 15G, 15H, 15P, 15W, 16 and 51

RC40710T042*

Complete Repair Kit (main seals, gland seals and gland assembly) includes keys 7, 11, 15A, 15B, 15D, 15E, 15F, 15G, 15H, 15J, 15P, 15R, 15S and 15W, 16, 17 and 51

RC40710T032*

Note

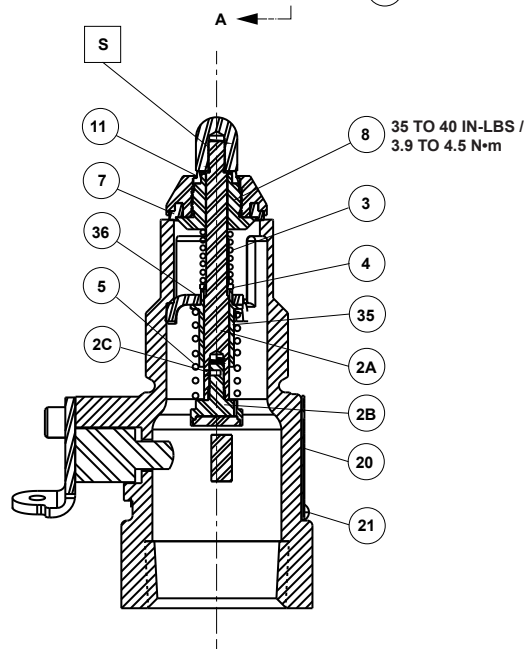
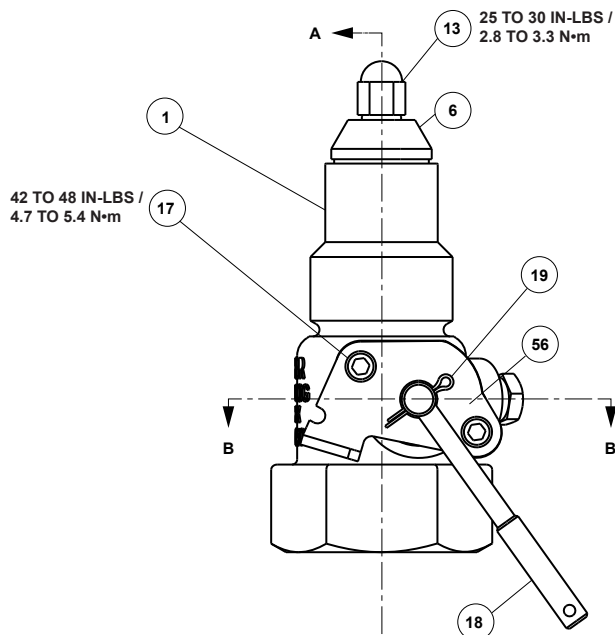
Type C407-10 dated prior to May 1987, stem replacement parts include keys: 2 - stem assembly, 5 - closing spring, and 35 - stem guide.

Type C407-10 dated after April 1987, stem replacement parts include key: 2 - stem assembly.

| Key | Description | Part Number |
|-----|----------------------------|-------------|
| 1 | Body | T40500T0012 |
| 2 | Stem Assembly | T13460T0012 |
| 2A | Stem | ----- |
| 2B | Follower | ----- |
| 2C | Groove Pin | ----- |
| 3 | Excess Flow Spring | |
| | 40 GPM / 151 L/min, Blue | T13414T0012 |
| | 50 GPM / 189 l/min, Green | T13413T0012 |
| | 80 GPM / 303 l/min, Orange | T13412T0012 |
| 4 | Spring Seat | T13403T0012 |
| 5 | Closing Spring | T13463T0012 |
| 6 | Disc Holder | T13396T0012 |
| 7* | Main Disc | T13397T0012 |
| 8 | Disc Retainer | T13404T0012 |
| 11* | Bleed Disc | T13395T0012 |
| 13 | Bleed Seat | T13406T0012 |

*Recommended Spare Part

1. Replacement Kits can be used in older versions of Type C407-10, manufactured before December 1, 2014. Old Kit RC40710T012 is only for Type C407-10 manufactured before December 1, 2014.



T80210

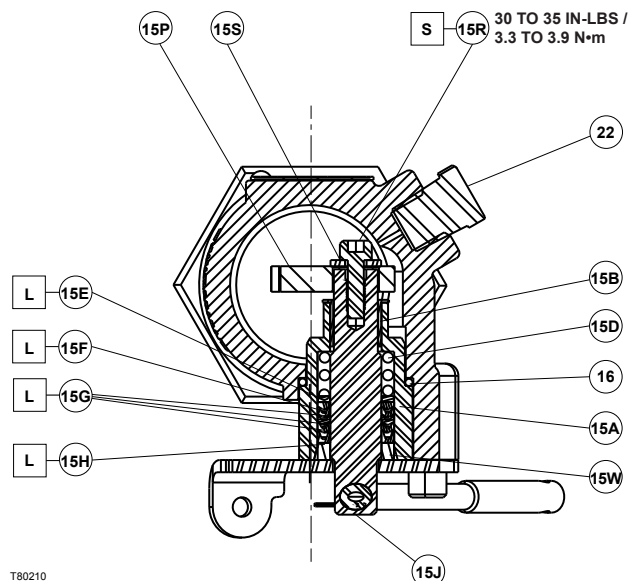
☐ APPLY SEALANT (S)⁽¹⁾

S = Medium Strength Threadlocker

1. Sealants must be selected such that they meet the temperature requirements.

Parts List (continued)

| Key | Description | Part Number |
|------|---------------------------|-------------|
| 15A | Gland | T13399T0012 |
| 15B* | Liner Bushing | T13410T0012 |
| 15D* | Spring | ERSA03857A0 |
| 15E | Washer | T1207524082 |
| 15F* | Male Adaptor | T1207701012 |
| 15G* | Packing Ring (3 required) | T1207801012 |
| 15H* | Female Adaptor | T1207901012 |
| 15J | Stub Shaft | T20846T0012 |
| 15P* | Cam | ERSA04806A0 |
| 15R | Cap Screw | 1D617032992 |
| 15S | Washer | T1173324152 |
| 15W* | Spacer | ERSA03858A0 |
| 16* | O-Ring | T13400T0012 |
| 17 | Cap Screw (2 required) | T13402T0012 |
| 18 | Lever | T13428T0012 |
| 19 | Cotter Pin | T13405T0012 |
| 21 | Drive screw (2 required) | 1A36822898 |
| 22 | Plug, Hex | T13718T0012 |
| 35 | Stem Guide | T13462T0012 |
| 36 | Guide Bracket | T20848T0012 |
| 46 | Loctite | 1M6159X0012 |
| 56 | Cover Plate | ERSA03861A0 |



T80210

☐ APPLY LUBRICANT (L) OR SEALANT (S)⁽¹⁾
L = Magnalube®-G
S = Medium Strength Threadlocker

Magnalube®-G is a registered trademark of Saunders Enterprises, Inc.

1. Lubricants and sealants must be selected such that they meet the temperature requirements.

*Recommended Spare Part

LP-Gas Equipment

Emerson Process Management Regulator Technologies, Inc.

USA - Headquarters
McKinney, Texas 75070 USA
Tel: +1 800 558 5853
Outside U.S. +1 972 548 3574

For further information visit www.fisherregulators.com

The Emerson logo is a trademark and service mark of Emerson Electric Co. All other marks are the property of their prospective owners. Fisher is a mark owned by Fisher Controls International LLC, a business of Emerson Process Management.

The contents of this publication are presented for informational purposes only, and while every effort has been made to ensure their accuracy, they are not to be construed as warranties or guarantees, express or implied, regarding the products or services described herein or their use or applicability. We reserve the right to modify or improve the designs or specifications of such products at any time without notice.

Emerson Process Management Regulator Technologies, Inc. does not assume responsibility for the selection, use or maintenance of any product. Responsibility for proper selection, use and maintenance of any Emerson Process Management Regulator Technologies, Inc. product remains solely with the purchaser.



EMERSON
Process Management