



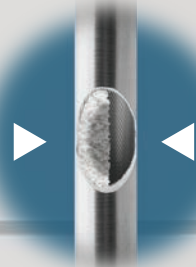
PLUMBING SOLUTIONS

maintenance

Calci-free™ Kit

Everything to maintain heating efficiency and maximum water flow in tankless water heaters.

Typical
deposit
buildup



Calci-free
flushes scale and
mineral deposits
away

RESTORE
CIRCULATION &
PRESSURE IN UNDER
20
MINUTES

◀ **HD Flush Bucket**
• Reusable



Calci-free
Tankless water heater
flush - 1.2 lbs.

No Mess -
Biodegradable
granules eliminates
splashes & spills

Easy to Use - Simply
mix the granules with
water & circulate
through the system
for a complete flush

◀ **HD Utility Pump**
• Submersible
• Chemical resistant
• Elevated pump strainer
• 3/4 in. GHT
connection

Discharge & Feeder Hoses ▶
• 7 ft. • Swivel fittings



Calci-free™ Kit

Complete tankless water heater flush kit

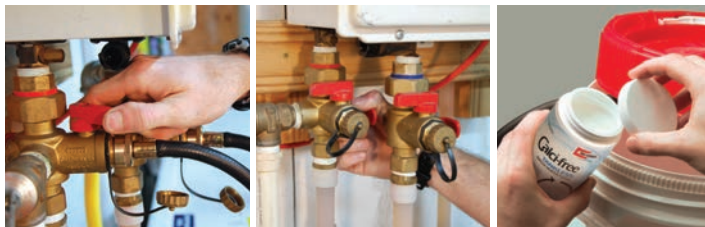
Code	Description	Qty.
68711	Flush Kit includes 1.2 lbs of Calci-free flush	1
68708	Calci-free 1.2 lbs	12

CONTAINS

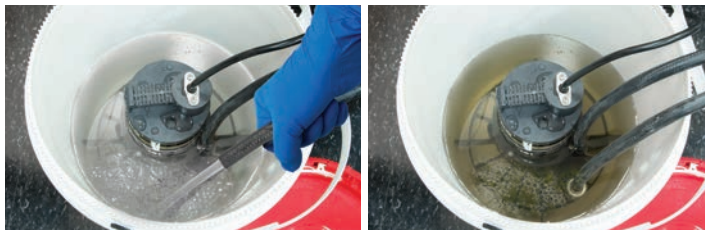
- One heavy duty, chemical resistant utility pump (submersible) with 3/4" GHT connection
- One 7' feeder hose w/swivel fittings
- One 7' discharge hose
- One elevated pump strainer/grate
- One 1.2 lbs Calci-free is certified to NSF/ANSI/CAN 60



DIRECTIONS FOR USE:



1. Turn off tankless water heater power source (electricity & gas), shut off main water supply valve. **2.** Close hot/cold water isolation valves. **3.** Clean sediment from cold water inlet screen. **4.** Add full contents of Calci-free and two gallons of water into Kit Bucket and dissolve completely. **5.** Connect one hose between water heater cold isolation valve and pump's discharge connector. **6.** Connect second hose to water heater hot isolation valve. Place other end directly into bucket. **7.** Place strainer to bottom of pail and place pump on strainer. **8.** Open hot and cold isolation valves. **9.** Turn on pump. Allow solution to recirculate 20 minutes. (Follow manufacture's service manual for specific cleaning instructions.) **10.** When cleaning is complete, turn off pump. Close cold isolation valve and remove hose. **11.** Remove pump from bucket. Dispose of used cleaning solution in accordance with local regulations.



12. Replace end of hose still connected to hot water isolation valve back into bucket. **13.** Open the cold-water inlet valve and completely flush out the tank using 5 times the stated tank capacity. **14.** Open water heater main water supply valve and allow cold water to circulate through water heater and bucket for 5 minutes (empty bucket as needed). **15.** Close hot isolation valve. Remove hose. **16.** Reconnect power source (electricity & gas).

NOTE: For optimum performance, clean water heater at least once per year. For additional technical information, call toll free 1-800-231-3345.

CAUTION: Not for use on aluminum